

Manufacturer	Source colour	Light Output Area/Length	Injection process	Input voltage
PHLOX	- LEDR	- BL - 50x50	- LLUB	- Q - 1R - 24V - V2
	Source type	Product type	Range	Number of light sources' rows per cicu

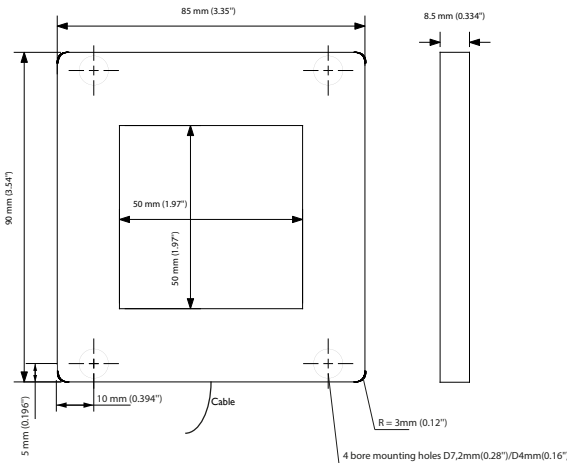
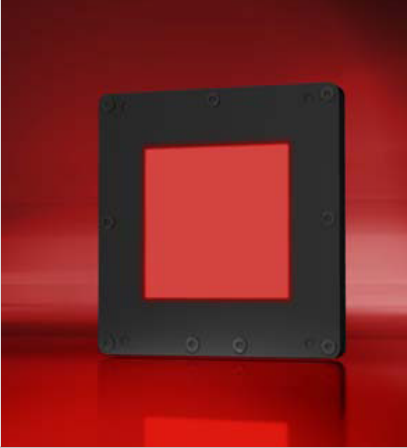
PHLOX® EXCLUSIVE LIGHT PROCESS
WORLDWIDE PATENT ISSUED

NEW!

LLUB (Long life Ultra Bright) Red led Backlight 50x50

LESS THAN 20% LUMINANCE LOSS AFTER 100 000 HOURS (*)

00000401 : PHLOX - LEDR - BL - 50x50 - LLUB - Q - 1R - 24V - V2



Illumination

Luminance minimum
Uniformity minimum
Source Type
Wavelength
Light Angular Distribution
Expected Life

≥27 000 cd/m² continuous mode
≥95% (+/- 10%)
Red LED
625 nm(+/- 15)
30° 1/2 angle
> 100 000 hours

Scan for DS
and 3D Files !



Electrical

Input Voltage
Input Current
Cable length
Connector
Cable pinout
CE Conformity
Strobe mode

24 VDC (continuous mode)
≤350 mA (continuous mode)
2 M - Ø 2.7 mm (6.56 ft - Ø 0.10")
None
None
Yes
Available in option

Outer unit

L x W x H
Housing Material
Weight
Mounting

90 x 85 x 8.5 mm (3.54 x 3.35 x 0.334")
Black Anodized Aluminium
120 g (4.2 oz)
4 bore holes (D7,2mm for the first 3.5 mm of height, D4 for the other 5 mm)

LLUB Backlights by PHLOX® offer the best life cycle, and the best luminance on the market, all in an ultra compact and IP-63 body. PHLOX® is the only manufacturer to provide uniformity and luminance datas on the quality control seal positioned at the back of every backlight.

DESIGNED FOR YOUR APPLICATION

Bottle inspection (glass and plastic)
Particle measurement
Picture digitalization
Dimensional control
Shaping control
Quality control with transparency.

& YOUR INDUSTRIAL SECTOR

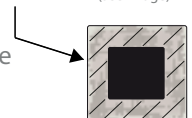
Glassmaking
Pharmaceutical/Cosmetics
Automotive
Agribusiness
Electronics
Aeronautics and space.

Environmental

Max. Operating Humidity
Operating Temperature
Storage Temperature
Shelf life
Max.temp.on housing

95% non-condensing
50°C (122°F) max
60°C (140°F) max
12 months from date of purchase
+80°C (+176°F)

area of temperature measurement
30mm all along the edges of the back of the black anodized aluminium housing (see image)



Do not cover the backlight when it's switched on.

Accessories

LED Dimmer: 28V-5A very compact and easy to use
Product key: PHLOX DIM LIGHT



Power supply: 110V and 220V
Product key: ALIM-24V-2.5A60WEU or ALIM-24V-2.5A60WUS

LED Strober: 28V - 5A (up to 40A in pulse mode)
Pulse width between 2µs and 10ms
Product key: PHLOX STROBE LIGHT

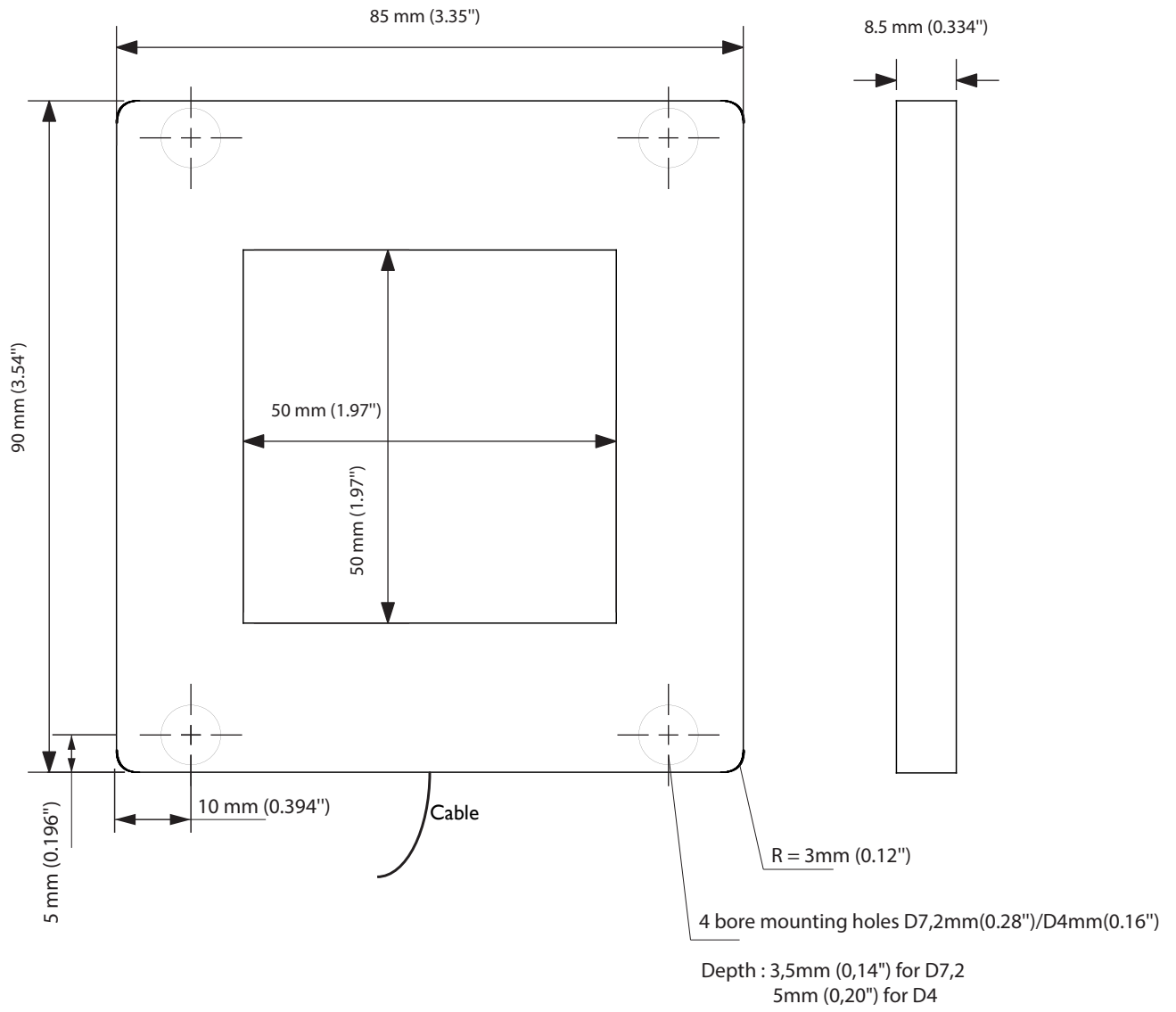


CLASS 0: NO RISK (CIE S2009:2002/NF EN 62471)

RoHS directive compliant

Each PHLOX Backlight is provided with:
- 24 months warranty
- Certificate of uniformity and luminance
- Seal of quality on the back

January 15th, 2025



PROPRIÉTÉ DE PHLOX SA- REPRODUCTION INTERDITE SAUF ACCORD ÉCRIT

00000401 : PHLOX-LEDR-BL-50X50-LLUB-Q-1R-24V -V2

TEL: 04 42 90 76 20
FAX: 04 42 90 76 21

