

A VISION
AHEAD



HOW TO READ THE PRODUCT KEY

Manufacturer **PHLOX** - Source colour **LEDW** - Light Output Area/Length **COAXLINEAR - X - 58,3x26,6** - Range **LLUB** - Input voltage **1R - 24V**
Source type Product type Profile size Number of light sources' rows

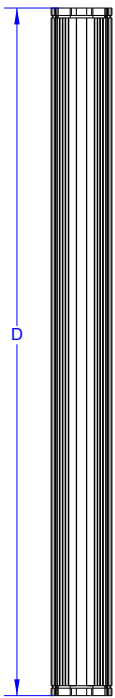
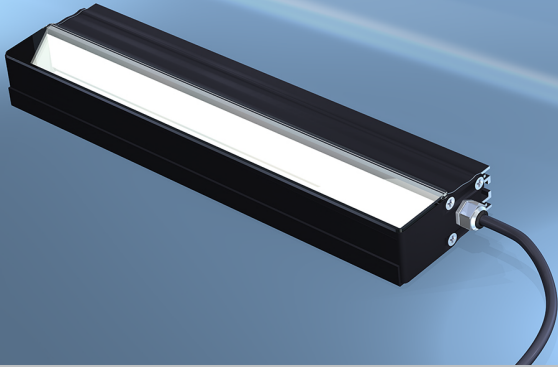
PHLOX® EXCLUSIVE LIGHT PROCESS
WORLDWIDE PATENT ISSUED

NEW !

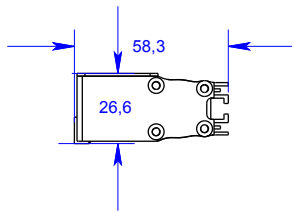
White coaxial linear light with constant current

LESS THAN 20% LUMINANCE LOSS AFTER 100 000 HOURS (*)
LESS THAN 10% CHROMATICITY SHIFT AFTER 100 000 HOURS (*)

PHLOX - LEDW - COAXLINEAR - X - 58,3X26,6 - LLUB - 1R - 24V



| D | Di | X | CC |
|-------|-------|-----|------|
| 92 | 3.62 | 64 | 0.18 |
| 119 | 4.68 | 91 | 0.24 |
| 146 | 5.75 | 118 | 0.3 |
| 173.5 | 6.83 | 145 | 0.36 |
| 200.5 | 7.89 | 172 | 0.42 |
| 227.5 | 8.96 | 199 | 0.48 |
| 255 | 10.04 | 227 | 0.54 |
| 282 | 11.1 | 254 | 0.6 |
| 309 | 12.16 | 281 | 0.66 |
| 336 | 13.23 | 308 | 0.72 |
| 363 | 14.29 | 335 | 0.78 |
| 390.5 | 15.37 | 362 | 0.84 |
| 417.5 | 16.44 | 389 | 0.9 |
| 444.5 | 17.5 | 416 | 0.96 |
| 471.5 | 18.56 | 443 | 1.02 |
| 498.5 | 19.63 | 470 | 1.08 |
| 525.5 | 20.69 | 497 | 1.14 |
| 554 | 21.81 | 526 | 1.2 |



Illumination

Luminance min. at 20mm ≥ 10 000 cd/m2 continuous mode
Uniformity minimum ≥ 80% (+/- 10%) (X x4mm) White
Source Type LED
Colour Temperature 5700°K (+/500)
Light Angular Distribution 15° 1/2 angle
Expected Life > 100 000 hours

Electrical

Input Voltage 24 VDC (continuous mode)
Input Current CC (Amps ±5%)
Cable length 0.6 M - Ø 3.7 mm (2 ft - Ø 0.14")
Connector None
Cable pinout
CE Conformity Yes
Strobe mode Not possible with 24V version, You need to order CUR version

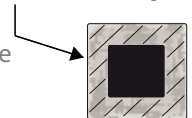
Outer unit

L x W x H D x 58.3 x 26.6mm (Di x 2.3 x 1.05")
Housing Material Black Anodized Aluminium
Weight From 86g (3 oz) up to 336g (11.85 oz)
Mounting Mounting with M4 screws

Environmental

Max. Operating Humidity 95% non-condensing
Operating Temperature 50°C (122°F) max
Storage Temperature 60°C (140°F) max
Shelf life 12 months from date of purchase
Max.temp.on housing +80°C (+176°F)

area of temperature measurement
30mm all along the edges of the back of
the black anodized aluminium housing
(see image)



IP40 (IP65 on request)

Do not cover the light when it's switched on.

Accessories

LED Dimmer: 28V-5A very compact and easy to use
 Product key: PHLOX DIM LIGHT



Power supply: 110V and 220V

Product key: ALIM-24V-2.5A60WEU or ALIM-24V-2.5A60WUS

The white coaxial linear light by PHLOX® offer the best uniformity on the market. PHLOX® is the only manufacturer to provide a 3D uniformity and luminance certificate with every light. This data is also available on the quality control seal positioned at the back of every backlight.

PHLOX Coaxial linear lights are ideal for inspecting flat and reflective surfaces, such as metal sheets, glass, and semiconductor wafers. They help in detecting surface defects like scratches, pits, and contaminants.

- Surface Inspection
- Print Inspection
- Measurement and Metrology
- OCR and Barcode Reading
- Surface Texture Analysis: detecting inconsistencies in textiles, paper, and plastics.
- Pharmaceutical Inspection
- wafer inspection, die bonding

CLASS 1: Low RISK (CIE S2009:2002/NF EN 62471)

RoHS directive compliant

Each PHLOX Linearlight is provided with:

- 24 months warranty
- Certificate of uniformity and luminance
- Seal of quality on the back

November 4th, 2024

PHLOX • 360 rue Louis Berton • 13290 AIX-EN-PROVENCE - FRANCE
Tel: +33 (0)4 42 90 76 20 - e-mail: sales@phlox-gc.com

www.phlox-gc.com