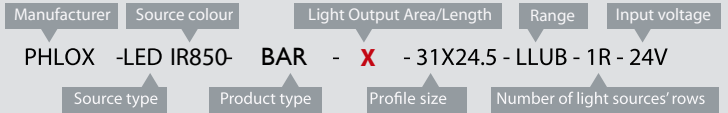


A VISION
AHEAD



HOW TO READ THE PRODUCT KEY



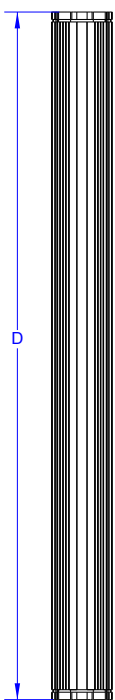
PHLOX® EXCLUSIVE LIGHT PROCESS

NEW !

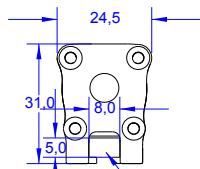
IR850 led bar light range with constant current

LESS THAN 20% LUMINANCE LOSS AFTER 100 000 HOURS (*)
LESS THAN 10% CHROMATICITY SHIFT AFTER 100 000 HOURS (*)

PHLOX - LEDIR850 - BAR - X - 31X24.5 - LLUB - 1R - 24V



D	Di	X	CC
119	4.68	91	0.24
173.5	6.83	145	0.36
227.5	8.96	199	0.48
282	11.1	254	0.6
336	13.23	308	0.72
390.5	15.37	362	0.84
444.5	17.5	416	0.96
498.5	19.63	470	1.08
554	21.81	526	1.2



For mounting using M4 screws

Bar lights by PHLOX® offer the best life cycle, the best chromaticity stability and the best luminance on the market, all in an ultra compact aluminium body. PHLOX® is the only manufacturer to provide uniformity and luminance datas on the quality control seal positioned at the back of every backlight.

DESIGNED FOR YOUR APPLICATION

- High speed inspection (glass and plastic)
- Linear inspection of reflective materials
- Web inspection
- Linear inspection of transparent materials
- Large surface inspection
- Quality control with transparency.

&YOUR INDUSTRIAL SECTOR

- Glassmaking
- Pharmaceutical/Cosmetics
- Automotive
- Agribusiness
- Electronics
- Aeronautics and space.

Illumination

Radiance minimum ≥ 400 w/m.sr² continuous mode
Uniformity minimum No diffuser on top of the leds
Source Type **IR850**
Wavelength 850 nm
Light Angular Distribution 4° 1/2 angle
Expected Life > 100 000 hours

Scan for DS and 3D files !



Electrical

Input Voltage 24 VDC (continuous mode)
Input Current **CC** (Amps ±5%)
Cable length 0.6 M – Ø 3.7 mm (2 ft – Ø 0.14")
Connector None
Cable pinout
CE Conformity Yes
Strobe mode **Not possible with 24V version, You need to order CUR version**

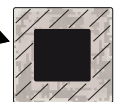
Outer unit

L x W x H **D** x 31 x 24.5mm (Di x 1.22 x 0.96")
Housing Material Black Anodized Aluminium
Weight From 86g (3 oz) up to 336g (11.85 oz)
Mounting Mounting with M4 screws

Environmental

Max. Operating Humidity 95% non-condensing
Operating Temperature 50°C (122°F) max
Storage Temperature 60°C (140°F) max
Shelf life 12 months from date of purchase
Max.temp.on housing +80°C (+176°F)

area of temperature measurement 30mm all along the edges of the back of the black anodized aluminium housing (see image)



Do not cover the light when it's switched on.

Accessories

LED Dimmer: 28V-5A very compact and easy to use
Product key: PHLOX DIM LIGHT



Power supply: 110V and 220V
Product key: ALIM-24V-2.5A60WEU or ALIM-24V-2.5A60WUS



CLASS 1: Low RISK (CIE S2009:2002/NF EN 62471)

RoHS directive compliant

Each PHLOX Barlight is provided with:

- 24 months warranty
- Seal of quality on the back

May 11, 2022