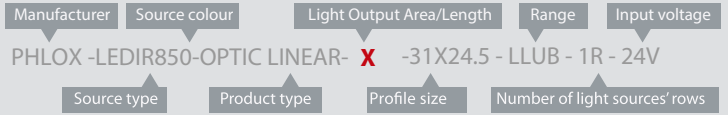


A VISION
AHEAD



HOW TO READ THE PRODUCT KEY



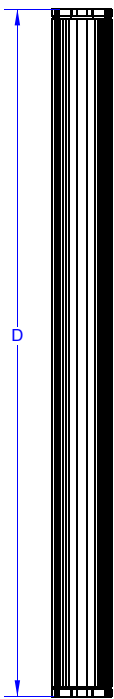
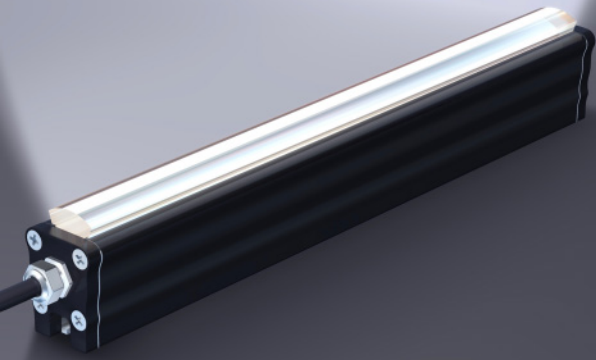
PHLOX® EXCLUSIVE LIGHT PROCESS

NEW !

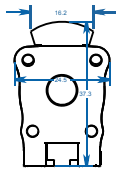
IR850 Optic Linear light and constant current

- LARGE DEPTH OF FIELD
- LESS THAN 20% LUMINANCE LOSS AFTER 100 000 HOURS (*)
- LESS THAN 10% CHROMATICITY SHIFT AFTER 100 000 HOURS (*)

PHLOX - LEDIR850 - OPTIC LINEAR - X - 31X24.5 - LLUB - 1R - 24V



D	Di	X	CC
119	4.68	91	0.24
173.5	6.83	145	0.36
227.5	8.96	199	0.48
282	11.1	254	0.6
336	13.23	308	0.72
390.5	15.37	362	0.84
444.5	17.5	416	0.96
498.5	19.63	470	1.08
554	21.81	526	1.2



For mounting using M4 screws

OPTIC Linear lights by PHLOX® offer the best life cycle, the best chromaticity stability and the best luminance on the market, all in an ultra compact aluminium body.

DESIGNED FOR YOUR APPLICATION

- High speed inspection (glass and plastic)
- Linear inspection of reflective materials
- Web inspection
- Linear inspection of transparent materials
- Large surface inspection
- Quality control with transparency.

&YOUR INDUSTRIAL SECTOR

- Glassmaking
- Pharmaceutical/Cosmetics
- Automotive
- Agribusiness
- Electronics
- Aeronautics and space.

Illumination

- Radiance minimum **≥600 w/m2.sr continuous mode**
- Uniformity minimum
- Source Type **Infra Red LED**
- Wavelength **850 nm**
- Light Angular Distribution
- Expected Life **> 100 000 hours**

Electrical

- Input Voltage **24 VDC (continuous mode)**
- Input Current **CC (Amps ±5%)**
- Cable length **0.6 M – Ø 3.7 mm (2 ft – Ø 0.14")**
- Connector **None**
- Cable pinout **None**
- CE Conformity **Yes**
- Strobe mode **Not possible with 24V version, You need to order CUR version**

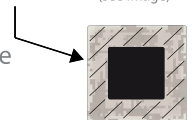
Outer unit

- L x W x H **D x 31 x 24.5mm (Di x 1.22 x 0.96")**
- Housing Material **Black Anodized Aluminium**
- Weight **From 86g (3 oz) up to 336g (11.85 oz)**
- Mounting **Mounting with M4 screws**

Environmental

- Max. Operating Humidity **95% non-condensing**
- Operating Temperature **50°C (122°F) max**
- Storage Temperature **60°C (140°F) max**
- Shelf life **12 months from date of purchase**
- Max.temp.on housing **+80°C (+176°F)**

area of temperature measurement
30mm all along the edges of the back of
the black anodized aluminium housing
(see image)



IP40

Do not cover the light when it's switched on.

Accessories

LED Dimmer: 28V-5A very compact and easy to use
Product key: PHLOX DIM LIGHT



Power supply: 110V and 220V

Product key: ALIM-24V-2.5A60WEU or ALIM-24V-2.5A60WUS



CLASS 2: Moderate RISK (CIE S2009:2002/NF EN 62471)

Each PHLOX OPTIC Linearlight is provided with:

- 24 months warranty
- Seal of quality on the back

RoHS directive compliant

May 11, 2022