

A VISION
AHEAD



HOW TO READ THE PRODUCT KEY

Manufacturer	Source colour	Light Output Area/Length	Range	Input voltage
PHLOX	-LEDIR850-	LINEAR -	X	- 31X24.5 - LLUB - 1R - 24V
Source type	Product type	Profile size	Number of light sources' rows	

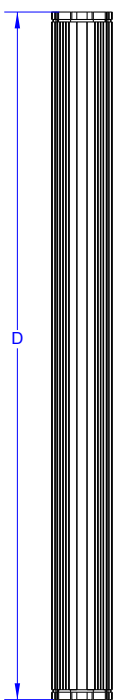
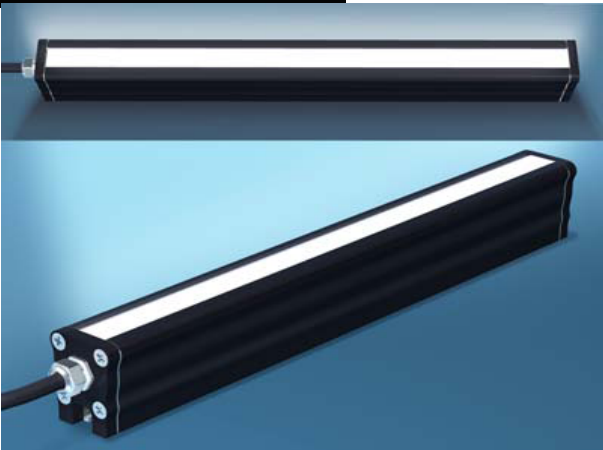
PHLOX® EXCLUSIVE LIGHT PROCESS

NEW !

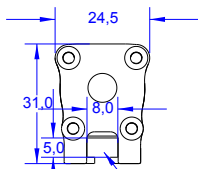
IR850 led Linear light range with constant current

LESS THAN 20% LUMINANCE LOSS AFTER 100 000 HOURS (*)
LESS THAN 10% CHROMATICITY SHIFT AFTER 100 000 HOURS (*)

PHLOX - LEDIR850 - LINEAR - X - 31X24.5 - LLUB - 1R - 24V



D	Di	X	CC
119	4.68	91	0.24
173.5	6.83	145	0.36
227.5	8.96	199	0.48
282	11.1	254	0.6
336	13.23	308	0.72
390.5	15.37	362	0.84
444.5	17.5	416	0.96
498.5	19.63	470	1.08
554	21.81	526	1.2



For mounting using M4 screws

Illumination

Radiance minimum	≥200 w/m.sr 2 continuous mode
Uniformity minimum	≥90% (+/- 10%) (X x4mm)
Source Type	IR LED
Wavelength	850 nm
Light Angular Distribution	15° 1/2 angle
Expected Life	> 100 000 hours

Electrical

Input Voltage	24 VDC (continuous mode)
Input Current	CC (Amps ±5%)
Cable length	0.6 M – Ø 3.7 mm (2 ft – Ø 0.14")
Connector	None
Cable pinout	None
CE Conformity	Yes
Strobe mode	Not possible with 24V version, You need to order CUR version

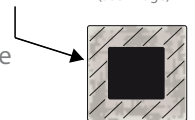
Outer unit

L x W x H	D x 31 x 24.5mm (Di x 1.22 x 0.96") (+/-2mm_0,0787")
Housing Material	Black Anodized Aluminium
Weight	From 86g (3 oz) up to 336g (11.85 oz)
Mounting	Mounting with M4 screws

Environmental

Max. Operating Humidity	95% non-condensing
Operating Temperature	50°C (122°F) max
Storage Temperature	60°C (140°F) max
Shelf life	12 months from date of purchase
Max.temp.on housing	+80°C (+176°F)

area of temperature measurement
30mm all along the edges of the back of
the black anodized aluminium housing
(see image)



IP40 (IP64 on request)

Do not cover the light when it's switched on.

Accessories

LED Dimmer: 28V-5A very compact and easy to use
Product key: PHLOX DIM LIGHT



Power supply: 110V and 220V
Product key: ALIM-24V-2.5A60WEU or ALIM-24V-2.5A60WUS

Linear lights by PHLOX® offer the best life cycle, the best chromaticity stability and the best luminance on the market, all in an ultra compact aluminium body. PHLOX® is the only manufacturer to provide uniformity and luminance datas on the quality control seal positioned at the back of every light.

DESIGNED FOR YOUR APPLICATION

- High speed inspection (glass and plastic)
- Linear inspection of reflective materials
- Web inspection
- Linear inspection of transparent materials
- Large surface inspection
- Quality control with transparency.

& YOUR INDUSTRIAL SECTOR

- Glassmaking
- Pharmaceutical/Cosmetics
- Automotive
- Agribusiness
- Electronics
- Aeronautics and space.

CLASS 1: Low RISK (CIE S2009:2002/NF EN 62471)

RoHS directive compliant

- Each PHLOX Linearlight is provided with:
- 24 months warranty
 - Certificate of uniformity and luminance
 - Seal of quality on the back

May 22, 2024