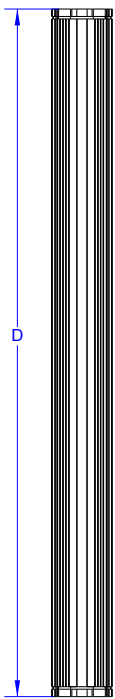


**NEW !**

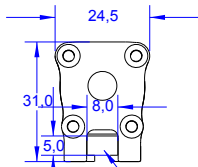
## Red led bar light range with constant current

LESS THAN 20% LUMINANCE LOSS AFTER 100 000 HOURS (\*)  
LESS THAN 10% CHROMATICITY SHIFT AFTER 100 000 HOURS (\*)

PHLOX - LEDR - BAR - X - 31X24.5 - LLUB - 1R - 24V



D	Di	X	CC
92	3.62	64	0.18
119	4.68	91	0.24
146	5.75	118	0.3
173.5	6.83	145	0.36
200.5	7.89	172	0.42
227.5	8.96	199	0.48
255	10.04	227	0.54
282	11.1	254	0.6
309	12.16	281	0.66
336	13.23	308	0.72
363	14.29	335	0.78
390.5	15.37	362	0.84
417.5	16.44	389	0.9
444.5	17.5	416	0.96
471.5	18.56	443	1.02
498.5	19.63	470	1.08
525.5	20.69	497	1.14
554	21.81	526	1.2



For mounting using M4 screws

Barlights by PHLOX® offer the best life cycle, the best chromaticity stability and the best luminance on the market, all in an ultra compact aluminium body.

PHLOX® is the only manufacturer to provide uniformity and luminance data on the quality control seal positioned at the back of every backlight.

### DESIGNED FOR YOUR APPLICATION

High speed inspection (glass and plastic)  
Linear inspection of reflective materials  
Web inspection  
Linear inspection of transparent materials  
Large surface inspection  
Quality control with transparency.

### &YOUR INDUSTRIAL SECTOR

Glassmaking  
Pharmaceutical/Cosmetics  
Automotive  
Agribusiness  
Electronics  
Aeronautics and space.

#### Illumination

Luminance minimum **≥ 200 000 cd/m<sup>2</sup> continuous mode**  
Uniformity minimum **No diffuser on top of the leds**  
Source Type **Red LED**  
Wavelength 630 nm  
Light Angular Distribution 4° 1/2 angle  
Expected Life **> 100 000 hours**

Scan for DS and 3D files !



#### Electrical

Input Voltage 24 VDC (continuous mode)  
Input Current **CC (Amps ±5%)**  
Cable length 0.6 M - Ø 3.7 mm (2 ft - Ø 0.14")  
Connector None  
Cable pinout **±**  
CE Conformity Yes  
Strobe mode **Not possible with 24V version, You need to order CUR version**

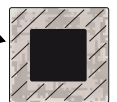
#### Outer unit

L x W x H **D x 31 x 24.5mm (Di x 1.22 x 0.96")**  
Housing Material Black Anodized Aluminium  
Weight From 86g (3 oz) up to 336g (11.85 oz)  
Mounting Mounting with M4 screws

#### Environmental

Max. Operating Humidity 95% non-condensing  
Operating Temperature 50°C (122°F) max  
Storage Temperature 60°C (140°F) max  
Shelf life 12 months from date of purchase  
Max. temp. on housing +80°C (+176°F)

area of temperature measurement  
30mm all along the edges of the back of the black anodized aluminium housing (see image)



Do not cover the light when it's switched on.

#### Accessories

**LED Dimmer:** 28V-5A very compact and easy to use  
Product key: PHLOX DIM LIGHT



**Power supply:** 110V and 220V  
Product key: ALIM-24V-2.5A60WEU or ALIM-24V-2.5A60WUS



CLASS 1: Low RISK (CIE S2009:2002/NF EN 62471)

**RoHS** directive compliant

Each PHLOX Barlight is provided with:

- 24 months warranty
- Seal of quality on the back

May 11, 2022