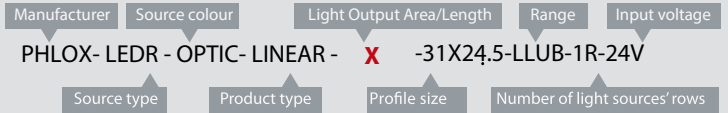


A VISION
AHEAD



HOW TO READ THE PRODUCT KEY



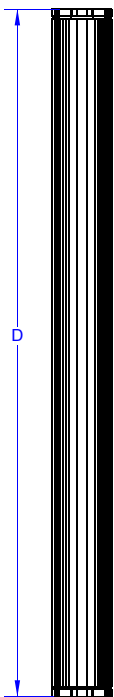
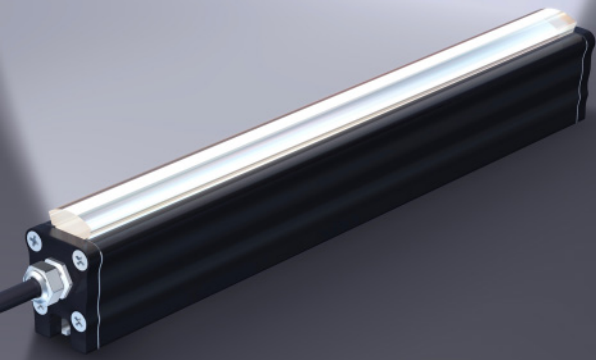
PHLOX® EXCLUSIVE LIGHT PROCESS

NEW !

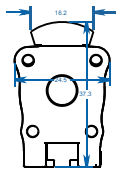
RED OPTIC Linear light and constant current

LARGE DEPTH OF FIELD
 LESS THAN 20% LUMINANCE LOSS AFTER 100 000 HOURS (*)
 LESS THAN 10% CHROMATICITY SHIFT AFTER 100 000 HOURS (*)

PHLOX - LEDR- OPTIC- LINEAR - X - 31X24.5 - LLUB - 1R - 24V



D	Di	X	CC
92	3.62	64	0.18
119	4.68	91	0.24
146	5.75	118	0.3
173.5	6.83	145	0.36
200.5	7.89	172	0.42
227.5	8.96	199	0.48
255	10.04	227	0.54
282	11.1	254	0.6
309	12.16	281	0.66
336	13.23	308	0.72
363	14.29	335	0.78
390.5	15.37	362	0.84
417.5	16.44	389	0.9
444.5	17.5	416	0.96
471.5	18.56	443	1.02
498.5	19.63	470	1.08
525.5	20.69	497	1.14
554	21.81	526	1.2



For mounting using M4 screws

OPTIC Linear lights by PHLOX® offer the **best life cycle, the best chromaticity stability and the luminance on the market**, all in an ultra compact aluminium body.

DESIGNED FOR YOUR APPLICATION

- High speed inspection (glass and plastic)
- Linear inspection of reflective materials
- Web inspection
- Linear inspection of transparent materials
- Large surface inspection
- Quality control with transparency

& YOUR INDUSTRIAL SECTOR

- Glassmaking
- Pharmaceutical/Cosmetics
- Automotive
- Agribusiness
- Electronics
- Aeronautics and space

Illumination

Luminance minimum **≥300 000 cd/m2 continuous mode**
 Uniformity minimum **Red LED**
 Source Type **Red LED**
 Wavelength 630 nm
 Light Angular Distribution
 Expected Life **> 100 000 hours**

Electrical

Input Voltage 24 VDC (continuous mode)
 Input Current **CC (Amps ±5%)**
 Cable length 0.6 M – Ø 3.7 mm (2 ft – Ø 0.14")
 Connector None
 Cable pinout ±
 CE Conformity Yes
 Strobe mode **Not possible with 24V version, You need to order CUR version**

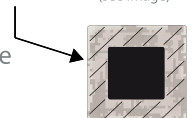
Outer unit

L x W x H **D x 31 x 24.5mm (Di x 1.22 x 0.96")**
 Housing Material Black Anodized Aluminium
 Weight From 86g (3 oz) up to 336g (11.85 oz)
 Mounting Mounting with M4 screws

Environmental

Max. Operating Humidity 95% non-condensing
 Operating Temperature 50°C (122°F) max
 Storage Temperature 60°C (140°F) max
 Shelf life 12 months from date of purchase
 Max.temp.on housing +80°C (+176°F)

area of temperature measurement
 30mm all along the edges of the back of
 the black anodized aluminium housing
 (see image)



IP40

Do not cover the light when it's switched on.

Accessories

LED Dimmer: 28V-5A very compact and easy to use
 Product key: PHLOX DIM LIGHT



Power supply: 110V and 220V
 Product key: ALIM-24V-2.5A60WEU or ALIM-24V-2.5A60WUS

RoHS directive compliant

CLASS 2: Moderate RISK (CIE S2009:2002/NF EN 62471)

Each PHLOX OPTIC Linearlight is provided with:

- 24 months warranty
- Seal of quality on the back

May 11, 2022