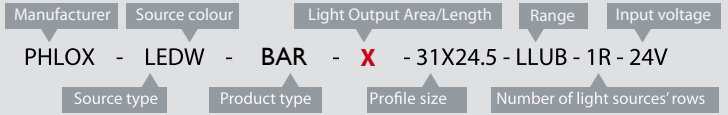


A VISION
AHEAD



HOW TO READ THE PRODUCT KEY



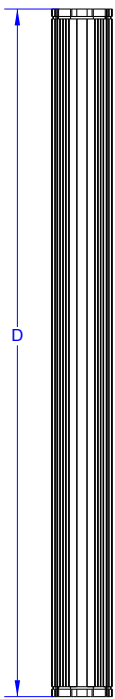
PHLOX® EXCLUSIVE LIGHT PROCESS

NEW !

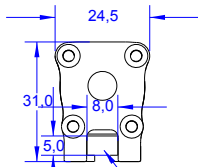
White led bar light range with constant current

LESS THAN 20% LUMINANCE LOSS AFTER 100 000 HOURS (*)
LESS THAN 10% CHROMATICITY SHIFT AFTER 100 000 HOURS (*)

PHLOX - LEDW - BAR - X - 31X24.5 - LLUB - 1R - 24V



D	Di	X	CC
92	3.62	64	0.18
119	4.68	91	0.24
146	5.75	118	0.3
173.5	6.83	145	0.36
200.5	7.89	172	0.42
227.5	8.96	199	0.48
255	10.04	227	0.54
282	11.1	254	0.6
309	12.16	281	0.66
336	13.23	308	0.72
363	14.29	335	0.78
390.5	15.37	362	0.84
417.5	16.44	389	0.9
444.5	17.5	416	0.96
471.5	18.56	443	1.02
498.5	19.63	470	1.08
525.5	20.69	497	1.14
554	21.81	526	1.2



For mounting using M4 screws

Barlights by PHLOX® offer the best life cycle, the best chromaticity stability and the best luminance on the market, all in an ultra compact aluminium body. PHLOX® is the only manufacturer to provide uniformity and luminance datas on the quality control seal positioned at the back of every backlight.

DESIGNED FOR YOUR APPLICATION

- High speed inspection (glass and plastic)
- Linear inspection of reflective materials
- Web inspection
- Linear inspection of transparent materials
- Large surface inspection
- Quality control with transparency

&YOUR INDUSTRIAL SECTOR

- Glassmaking
- Pharmaceutical/Cosmetics
- Automotive
- Agribusiness
- Electronics
- Aeronautics and space.

Illumination

Luminance minimum
Uniformity minimum
Source Type
Colour Temperature
Light Angular Distribution
Expected Life

≥800 000 cd/m² continuous mode
No diffusor on top of the leds
White LED
5700°K (+/-500)
4° 1/2 angle
> 100 000 hours

Scan for DS and 3D files !



Electrical

Input Voltage
Input Current
Cable length
Connector
Cable pinout
CE Conformity
Strobe mode

24 VDC (continuous mode)
CC (Amps ±5%)
0.6 M – Ø 3.7 mm (2 ft – Ø 0.14")
None
None
Yes
Yes

Not possible with 24V version, You need to order CUR version

Outer unit

L x W x H
Housing Material
Weight
Mounting

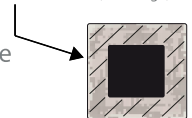
D x 31 x 24.5mm (Di x 1.22 x 0.96") (+/-2mm_0,0787")
Black Anodized Aluminium
From 86g (3 oz) up to 336g (11.85 oz)
Mounting with M4 screws

Environmental

Max. Operating Humidity
Operating Temperature
Storage Temperature
Shelf life
Max.temp.on housing

95% non-condensing
50°C (122°F) max
60°C (140°F) max
12 months from date of purchase
+80°C (+176°F)

area of temperature measurement
30mm all along the edges of the back of the black anodized aluminium housing (see image)



Do not cover the light when it's switched on.

Accessories

LED Dimmer: 28V-5A very compact and easy to use
Product key: PHLOX DIM LIGHT



Power supply: 110V and 220V
Product key: ALIM-24V-2.5A60WEU or ALIM-24V-2.5A60WUS



CLASS 1: Low RISK (CIE S2009:2002/NF EN 62471)

RoHS directive compliant

Each PHLOX Barlight is provided with:

- 24 months warranty
- Seal of quality on the back

May 22, 2024