



NEW!

PHLOX® EXCLUSIVE LIGHT PROCESS
WORLDWIDE PATENT ISSUED

HSCAT (High Speed Camera) White led Backlight 100x100 +Power supply

PHLOX - LEDW - BL - 100x100 - HSCAT - Q - 1R - 24V

Illumination

Luminance minimum

Uniformity minimum

Source Type

Colour Temperature

Light Angular Distribution

Expected Life

≥130 000 cd/m² continuous mode

≥95% (+/- 10%)

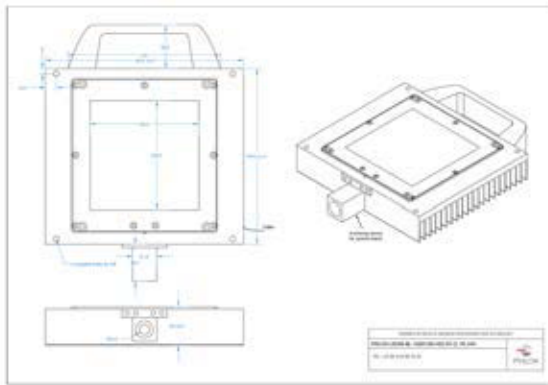
White LED

5700°K (+/-500)

30° 1/2 angle (**less stray light**)

> 20 000 hours

Scan for DS
and 3D Files !



Electrical

Input Voltage

Input Current

Cable length

Connector

24 VDC (continuous mode)

≤2.2 A (continuous mode)

4.1 M (±0.1m) – (13.45 ft ±0.33) including power supply

XLR3 male on backlight/ XLR3 female on power supply

Yes :

CE Conformity

Strobe mode

Power supply (included)

Max. Cur: 14A / Pulse Width: 10ms / Duty Ratio: 1/10

MeanWell 24V, 2.5A (GST60A24-P1J)*

Outer unit

L x W x H

Housing Material

Weight backlight

234.4 x 182 x 33 mm (9.23 x 7.16 x 1.30")
(handle and anchoring device included)

Black Anodized Aluminium

860 g (30.3 oz)

Environmental

Max. Operating Humidity

Operating Temperature

Storage Temperature

Shelf life

Max.temp.on housing

95% non-condensing

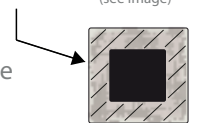
40°C (104°F) max

50°C (122°F) max

12 months from date of purchase

110°C (+230°F) max

30mm all along the edges of the back of
the black anodized aluminium housing
(see image)



Do not cover the backlight when it's switched on.

Accessories

LED Dimmer : 28V-5A very compact and easy to use

Product key: PHLOX DIM LIGHT



LED Strober 48V - 5A (up to 40A in pulse mode)

Pulse width between 2µs and 10ms

Product key: PHLOX STROBE LIGHT



DESIGNED FOR YOUR APPLICATION

Shadowgraphy, Particle analysis, Ballistics, Spray analysis (water, paint, fuel, etc...)

Droplet impactation, Bubble formation, Powder, solid particles, Emulsions and dispersions

Welding, Liquid interface

RoHS directive compliant

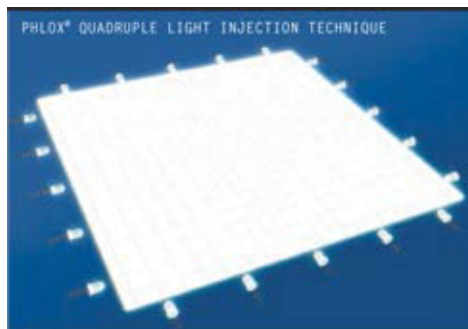
CLASS 0: NO RISK (CIE S2009:2002/NF EN 62471)

Each PHLOX Backlight is provided with:

- 24 months warranty
- Certificate of uniformity and luminance
- Seal of quality on the back

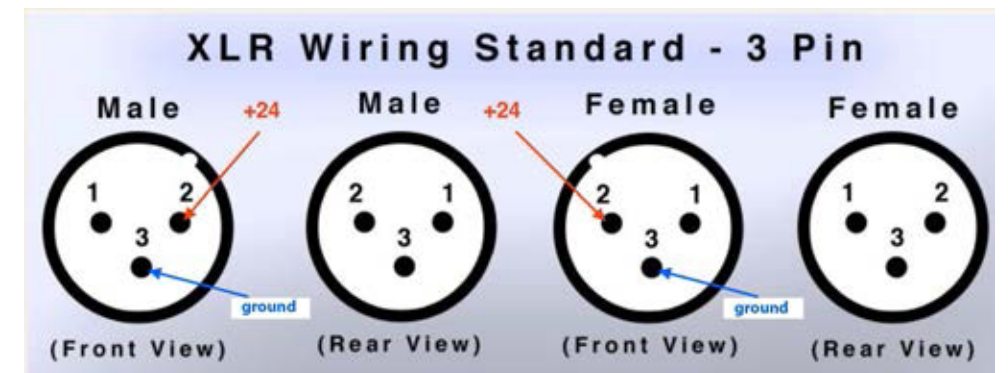
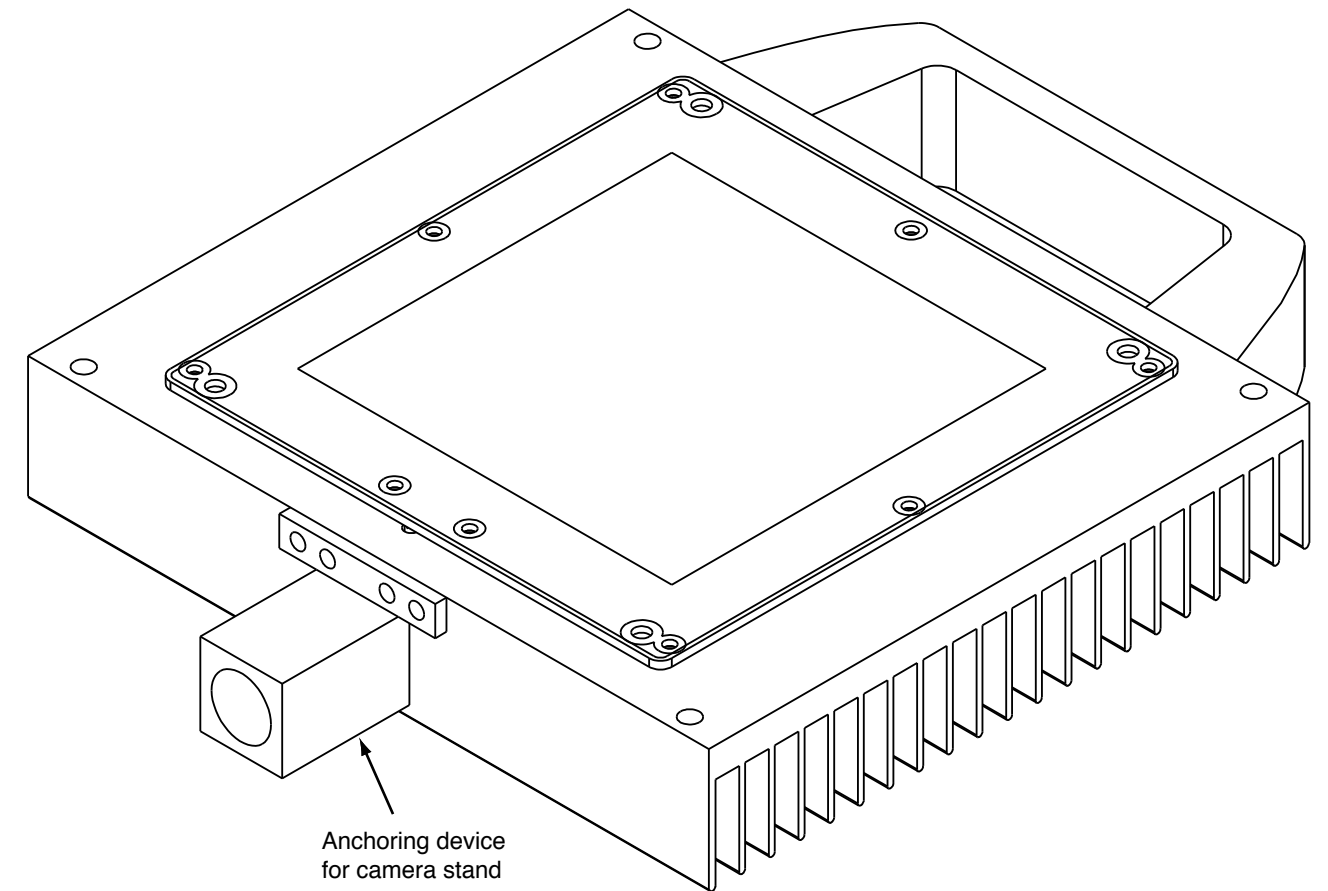
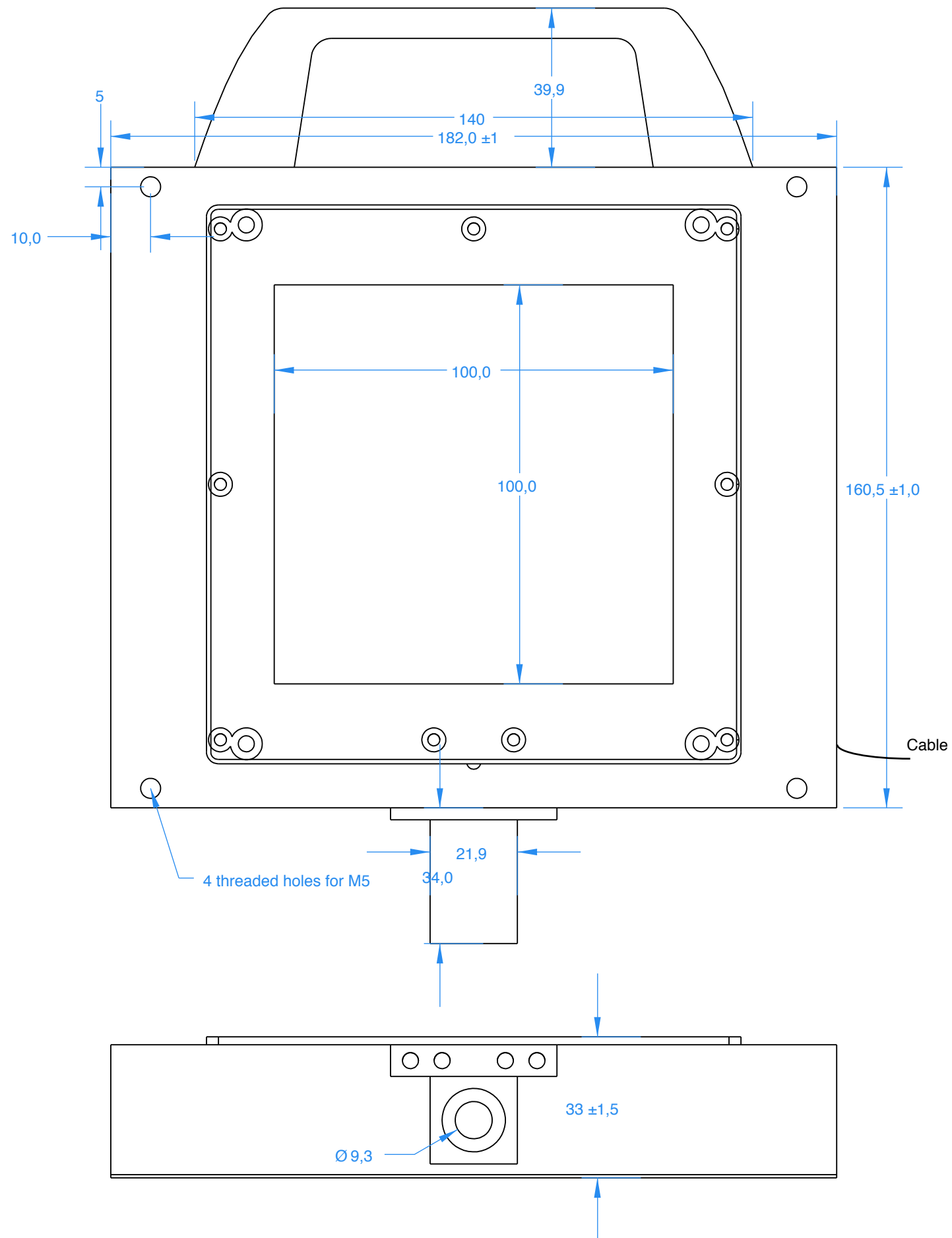
July 15 2022

HSC Backlights by PHLOX®, designed for the Phantom® High Speed Camera offer the best luminance on the market.



INNOVATION

PHLOX® uses optical processes: a PMMA pipe lighted by a linear source made up of LED (Light Emitting Diodes). Our manufacturing process (CO2 laser) enables us to combine refraction and diffusion which improves backlight luminance. Up to 90% of the light injected can be reemitted on the surface. Thanks to the use of mathematical models, PHLOX® emits light in a determinist and perfectly controlled manner



PROPRIÉTÉ DE PHLOX SA- REPRODUCTION INTERDITE SAUF ACCORD ÉCRIT

PHLOX-LEDW-BL-100X100-HSCAT-Q-1R-24V

TEL: +33 (0) 4 42 90 76 20

