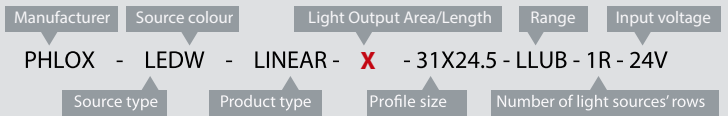


A VISION
AHEAD



HOW TO READ THE PRODUCT KEY



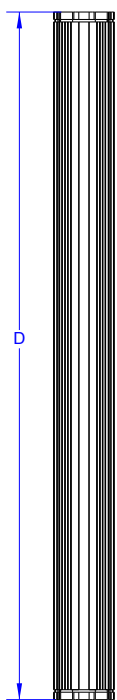
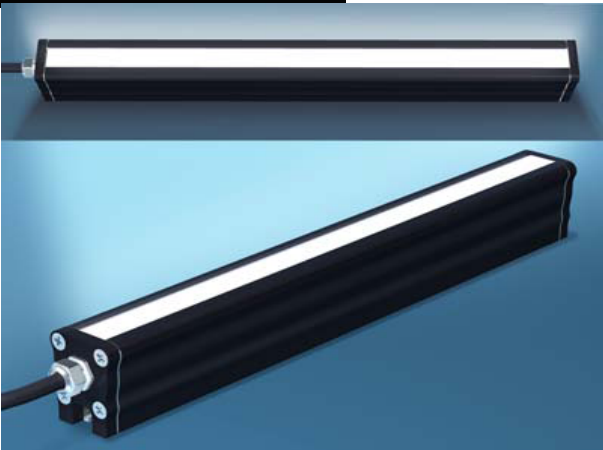
PHLOX® EXCLUSIVE LIGHT PROCESS

NEW !

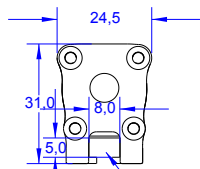
White led Linear light range with constant current

LESS THAN 20% LUMINANCE LOSS AFTER 100 000 HOURS (*)
LESS THAN 10% CHROMATICITY SHIFT AFTER 100 000 HOURS (*)

PHLOX - LEDW - LINEAR - X - 31X24.5 - LLUB - 1R - 24V



D	Di	X	CC
92	3.62	64	0.18
119	4.68	91	0.24
146	5.75	118	0.3
173.5	6.83	145	0.36
200.5	7.89	172	0.42
227.5	8.96	199	0.48
255	10.04	227	0.54
282	11.1	254	0.6
309	12.16	281	0.66
336	13.23	308	0.72
363	14.29	335	0.78
390.5	15.37	362	0.84
417.5	16.44	389	0.9
444.5	17.5	416	0.96
471.5	18.56	443	1.02
498.5	19.63	470	1.08
525.5	20.69	497	1.14
554	21.81	526	1.2



For mounting using M4 screws

Illumination

Luminance minimum **≥320.000cd/m² continuous mode**
 Uniformity minimum **≥90% (+/- 10%) (X x4mm) White LED**
 Source Type 5700°K (+/-500)
 Colour Temperature 15° 1/2 angle
 Light Angular Distribution
 Expected Life **> 100 000 hours**

Electrical

Input Voltage 24 VDC (continuous mode)
 Input Current **CC** (Amps ±5%)
 Cable length 0.6 M – Ø 3.7 mm (2 ft – Ø 0.14")
 Connector None
 Cable pinout
 CE Conformity Yes
 Strobe mode **Not possible with 24V version, You need to order CUR version**

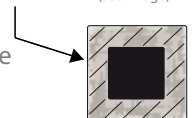
Outer unit

L x W x H **D** x 31 x 24.5mm (**Di** x 1.22 x 0.96")
 Housing Material Black Anodized Aluminium
 Weight From 86g (3 oz) up to 336g (11.85 oz)
 Mounting Mounting with M4 screws

Environmental

Max. Operating Humidity 95% non-condensing
 Operating Temperature 50°C (122°F) max
 Storage Temperature 60°C (140°F) max
 Shelf life 12 months from date of purchase
 Max.temp.on housing +80°C (+176°F)

area of temperature measurement
30mm all along the edges of the back of
the black anodized aluminium housing
(see image)



IP40 (IP64 on request)

Do not cover the light when it's switched on.

Accessories

LED Dimmer: 28V-5A very compact and easy to use
 Product key: PHLOX DIM LIGHT



Power supply: 110V and 220V
 Product key: ALIM-24V-2.5A60WEU or ALIM-24V-2.5A60WUS

Linear lights by PHLOX® offer the best life cycle, the best chromaticity stability and the best luminance on the market, all in an ultra compact aluminium body. PHLOX® is the only manufacturer to provide uniformity and luminance datas on the quality control seal positioned at the back of every light.

DESIGNED FOR YOUR APPLICATION

- High speed inspection (glass and plastic)
- Linear inspection of reflective materials
- Web inspection
- Linear inspection of transparent materials
- Large surface inspection
- Quality control with transparency.

& YOUR INDUSTRIAL SECTOR

- Glassmaking
- Pharmaceutical/Cosmetics
- Automotive
- Agribusiness
- Electronics
- Aeronautics and space.

CLASS 1: Low RISK (CIE S2009:2002/NF EN 62471)

RoHS directive compliant

- Each PHLOX Linearlight is provided with:
- 24 months warranty
 - Certificate of uniformity and luminance
 - Seal of quality on the back

May 11, 2022