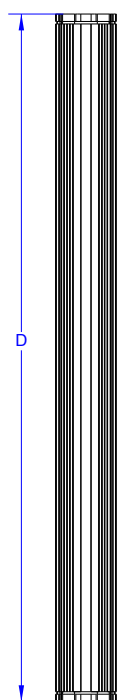
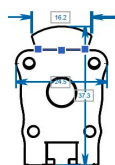


A VISION  
AHEAD



D	Di	X	CC
581,5	22,89	553	1,26
608,5	23,96	580	1,32
635,5	25,02	607	1,38
662,5	26,08	634	1,44
689,5	27,15	661	1,50
717	28,23	689	1,56
744	29,29	716	1,62
771	30,35	743	1,68
798,5	31,44	770	1,74
825,5	32,50	797	1,80
852,5	33,56	824	1,86
879,5	34,63	851	1,92
906,5	35,69	878	1,98
934	36,77	906	2,04
961	37,83	933	2,10
988	38,90	960	2,16
1015	39,96	987	2,22

P  
O  
S  
S  
I  
B  
L  
E  
  
C  
U  
S  
T  
O  
M  
  
L  
E  
N  
G  
T  
H  
S



For mounting using M4 screws

**OPTIC lights by PHLOX®** offer the **best life cycle, the best chromaticity stability and the best luminance on the market**, all in an ultra compact aluminium body. **PHLOX®** is the only manufacturer to provide uniformity and luminance datas on the quality control seal positioned at the back of every light.

## DESIGNED FOR YOUR APPLICATION

High speed inspection (glass and plastic)  
Linear inspection of reflective materials  
Web inspection  
Linear inspection of transparent materials  
Large surface inspection  
Quality control with transparency.

## & YOUR INDUSTRIAL SECTOR

Glassmaking  
Pharmaceutical/Cosmetics  
Automotive  
Agribusiness  
Electronics  
Aeronautics and space.

HOW TO READ THE PRODUCT KEY

Manufacturer Source colour Light Output Area/Length Range Input voltage  
PHLOX - LEDW- OPTIC - LINEAR - **X** -31X24.5-MLLUB-1R-24V  
Source type Product type Profile size Number of light sources' rows

# NEW!

PHLOX® EXCLUSIVE LIGHT PROCESS

## White Optic Linear light

### and constant current

Large depth of field  
LESS THAN 20% LUMINANCE LOSS AFTER 100 000 HOURS (\*)  
LESS THAN 10% CHROMATICITY SHIFT AFTER 100 000 HOURS (\*)

**PHLOX - LEDW -OPTIC- LINEAR - **X** - 31X24.5 - MLLUB - 1R - 24V**

### Illumination

Luminance minimum  $\geq 1\,000\,000\text{cd/m}^2$  continuous mode  
Uniformity minimum  
Source Type White led  
Colour Temperature 5700°K(+/-500)  
Light Angular Distribution  
Expected Life > 100 000 hours

### Electrical

Input Voltage 24 VDC (continuous mode)  
Input Current CC (Amps  $\pm 5\%$ )  
Cable length 0.6 M – Ø 3.7 mm (2 ft – Ø 0.14")  
Connector None  
Cable pinout   
CE Conformity Yes  
Strobe mode Not possible with 24V version, You need to order CUR version

### Outer unit

L x W x H D x 31 x 24.5mm (Di x 1,22 x 0.96") (+/-2mm\_0,0787")  
Housing Material Black Anodized Aluminium  
Weight From 86g (3 oz) up to 336g (11.85 oz)  
Mounting Mounting with M4 screws  
D/Di : other lengths on demand up to 2500mm

### Environmental

Max. Operating Humidity 95% non-condensing  
Operating Temperature 50°C (122°F) max  
Storage Temperature 60°C (140°F) max  
Shelf life 12 months from date of purchase  
Max.temp.on housing +80°C (+176°F)

### IP40

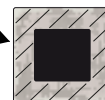
Do not cover the light when it's switched on.

### Accessories

**LED Dimmer:** 28V-5A very compact and easy to use  
Product key: PHLOX DIM LIGHT

**Power supply:** 110V and 220V  
Product key: ALIM-24V-2.5A60WEU or ALIM-24V-2.5A60WUS

area of temperature measurement  
30mm all along the edges of the back of  
the black anodized aluminium housing  
(see image)



CLASS 2: Moderate RISK (CIE S2009:2002/NF EN 62471)

**RoHS** directive compliant

Each PHLOX Linearlight is provided with:

- 24 months warranty
- Seal of quality on the back

May 22nd, 2024